

# \$475,000 - 1801, 280 Chelsea Road, Chestermere

MLS® #A2266676

**\$475,000**

4 Bedroom, 3.00 Bathroom, 1,690 sqft  
Residential on 0.00 Acres

Chelsea\_CH, Chestermere, Alberta

Experience stylish, low-maintenance living in this beautifully designed 4-bedroom, 2.5-bath end-unit townhome with an attached double garage. Perfectly situated just 20 minutes from downtown Calgary and 5 minutes from the new Costco, this home offers the perfect blend of convenience, comfort, and modern design.

**Main Level** – Open Concept Elegance

The bright and spacious main floor features an open-concept layout with large windows, sleek vinyl flooring, and designer lighting. The gourmet kitchen is a chef’s dream, showcasing quartz countertops, a tile backsplash, full-height cabinetry, stainless steel appliances, and a central island with dual sink – ideal for entertaining or family gatherings. The adjoining living and dining areas flow seamlessly onto a large front balcony with a gas line for BBQs, perfect for outdoor relaxation.

**Upper Level** – Comfort & Convenience

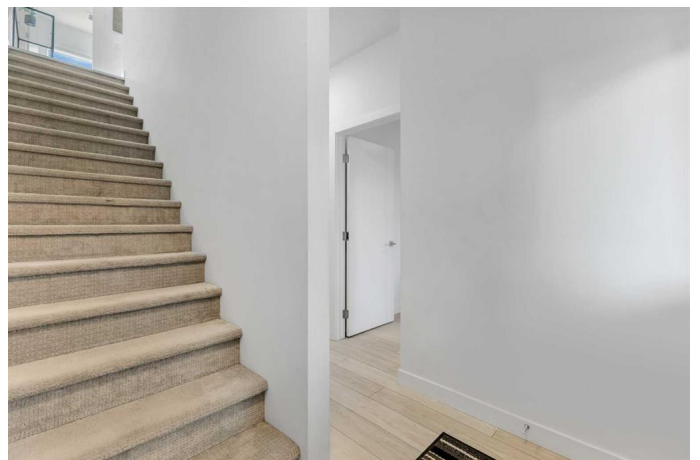
Upstairs, the primary suite features a walk-in closet and a private ensuite. Two additional bedrooms share a modern full bath, while the laundry room with a full-sized Whirlpool washer and dryer adds everyday convenience.

**Lower Level** – Flexible Living Space

The entry level includes a versatile fourth bedroom or home office, along with access to the attached double garage, mechanical room, and additional storage.

**Community & Location**

Located in the award-winning Truman-built Aberdeen Towns, this master-planned



community offers future amenities including new schools, parks, and lifestyle features “ all along the scenic shores of Chestermere Lake. Enjoy easy access to Walmart, Costco, restaurants, schools, and parks, making it an ideal home for families and professionals alike. Your opportunity to own in one of Chestermere’s most sought-after communities awaits. Contact your Realtor today to book a private showing!

Built in 2024

### Essential Information

MLS® #	A2266676
Price	\$475,000
Bedrooms	4
Bathrooms	3.00
Full Baths	2
Half Baths	1
Square Footage	1,690
Acres	0.00
Year Built	2024
Type	Residential
Sub-Type	Row/Townhouse
Style	3 Storey
Status	Active

### Community Information

Address	1801, 280 Chelsea Road
Subdivision	Chelsea_CH
City	Chestermere
County	Chestermere
Province	Alberta
Postal Code	T1X 2P4

### Amenities

Amenities	Park, Visitor Parking
Parking Spaces	2

Parking	Double Garage Attached
# of Garages	2

### **Interior**

Interior Features	Kitchen Island, No Animal Home, No Smoking Home, Open Floorplan, Quartz Counters, See Remarks, Walk-In Closet(s)
Appliances	Dishwasher, Electric Stove, Microwave Hood Fan, Refrigerator, Washer/Dryer
Heating	Forced Air
Cooling	None
Basement	None

### **Exterior**

Exterior Features	Balcony
Lot Description	Back Lane, Front Yard, See Remarks
Roof	Asphalt Shingle
Construction	Stone, Vinyl Siding, Wood Frame
Foundation	Poured Concrete

### **Additional Information**

Date Listed	October 25th, 2025
Days on Market	15
Zoning	M-G

### **Listing Details**

Listing Office	eXp Realty
----------------	------------

Data is supplied by Pillar 9â„¢ MLSÂ® System. Pillar 9â„¢ is the owner of the copyright in its MLSÂ® System. Data is deemed reliable but is not guaranteed accurate by Pillar 9â„¢. The trademarks MLSÂ®, Multiple Listing ServiceÂ® and the associated logos are owned by The Canadian Real Estate Association (CREA) and identify the quality of services provided by real estate professionals who are members of CREA. Used under license.