

\$998,800 - 1360 Shawnee Road Sw, Calgary

MLS® #A2258270

\$998,800

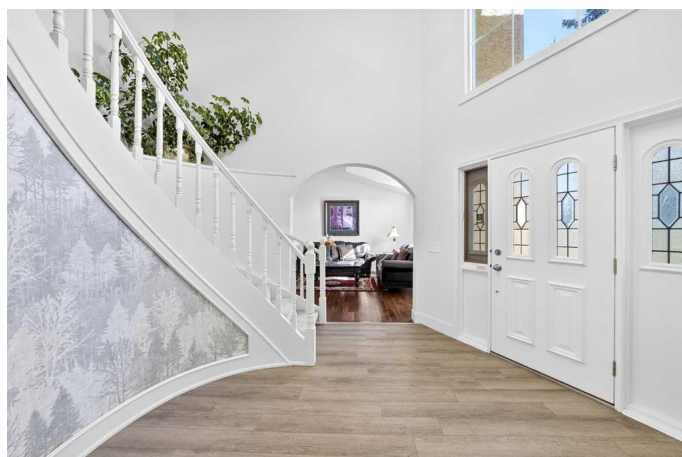
5 Bedroom, 4.00 Bathroom, 2,830 sqft
Residential on 0.13 Acres

Shawnee Slopes, Calgary, Alberta

Welcome to this elegant home with a durable clay tile roof, offering over 4,000 sq. ft. of developed living space with 4+1 Bedrooms and 3.5 Baths. Set apart by its soaring spaces and thoughtful design, this home is perfect for a growing family, balancing comfort with style across its multiple levels for everyday living and entertaining.

The main floor greets you with a 17' high ceiling foyer and a graceful spiral staircase. To the right, the sunny south-facing Living Room and formal Dining Room share an 11' vaulted ceiling and gleaming hardwood flooring, creating a warm and inviting atmosphere that easily fits an 8-person dining table. The bright white Kitchen features a centre island with quartz countertops, ample cabinets, and a pantry, seamlessly connecting to the Breakfast Nook with access to the large 17' x 10' Deck with gas hookup, perfect for morning coffee or relaxing evenings outdoors. A spacious Family Room with built-in bookshelves, a wood-burning fireplace, and large windows is perfect for gatherings. A private Den with French doors, Powder Room, and Laundry with sink complete this level.

On the upper level, the spacious Primary Bedroom includes a cozy seating area with distant views of downtown, and a luxurious 5-pc Ensuite featuring a double vanity, jetted tub, and walk-in closet. Three additional Bedrooms and a full Bath with double vanity



provide ample space for family.

The fully finished walkout basement boasts higher ceilings and a massive Recreation Room with built-in shelves, a sink, and a gas fireplace. This versatile area can easily be divided into two separate spacesâ€”currently set up as a gym and a family lounge. A good sized Bedroom and 4-pc Bath complete this level. Step out to the covered patio and landscaped backyard, with a concrete pathway leading to the front yard and the oversized double attached garage.

Located in the desirable Shawnee Slopes community, this home is steps from Fish Creek Provincial Park and close to top-rated schools. Residents can also enjoy the Millrise Outdoor Rink during winter, perfect for skating and community events. Easy access to Shawnessy Shopping District and convenient transit options complete this safe and welcoming neighborhood.

Built in 1989

Essential Information

MLS® #	A2258270
Price	\$998,800
Bedrooms	5
Bathrooms	4.00
Full Baths	3
Half Baths	1
Square Footage	2,830
Acres	0.13
Year Built	1989
Type	Residential
Sub-Type	Detached
Style	2 Storey
Status	Active

Community Information

Address	1360 Shawnee Road Sw
Subdivision	Shawnee Slopes
City	Calgary
County	Calgary
Province	Alberta
Postal Code	T2Y 2T1

Amenities

Parking Spaces	4
Parking	Double Garage Attached, Oversized
# of Garages	2

Interior

Interior Features	Bookcases, Closet Organizers, Double Vanity, French Door, High Ceilings, Jetted Tub, Kitchen Island, Pantry, Quartz Counters, Vaulted Ceiling(s), Walk-In Closet(s), Wet Bar
Appliances	Dishwasher, Dryer, Electric Cooktop, Garage Control(s), Microwave, Oven, Refrigerator, Washer, Window Coverings
Heating	Forced Air, Natural Gas
Cooling	None
Fireplace	Yes
# of Fireplaces	2
Fireplaces	Family Room, Gas, Recreation Room, Wood Burning
Has Basement	Yes
Basement	Finished, Full, Walk-Out

Exterior

Exterior Features	BBQ gas line
Lot Description	Back Yard, Landscaped, Rectangular Lot
Roof	Clay Tile
Construction	Stucco, Wood Frame
Foundation	Poured Concrete

Additional Information

Date Listed	September 18th, 2025
Zoning	R-CG

Listing Details

Listing Office	Jessica Chan Real Estate & Management Inc.
----------------	--

Data is supplied by Pillar 9â„¢ MLS® System. Pillar 9â„¢ is the owner of the copyright in its MLS® System. Data is deemed reliable but is not guaranteed accurate by Pillar 9â„¢. The trademarks MLS®, Multiple Listing Service® and the associated logos are owned by The Canadian Real Estate Association (CREA) and identify the quality of services provided by real estate professionals who are members of CREA. Used under license.