

# \$519,900 - 60 Dover Meadow Close Se, Calgary

---

MLS® #A2239277

**\$519,900**

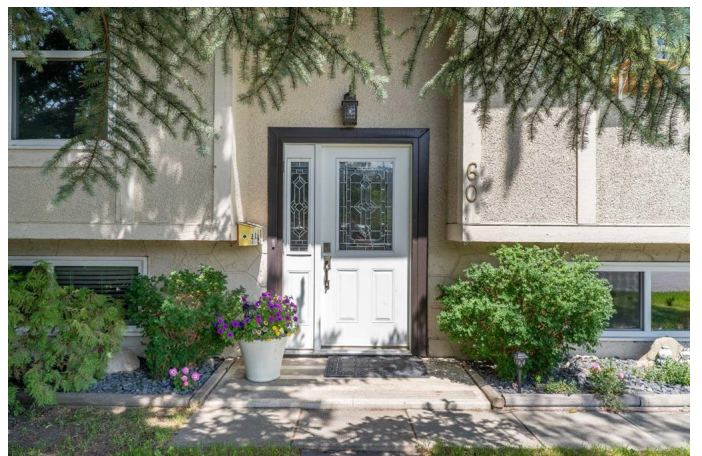
2 Bedroom, 2.00 Bathroom, 966 sqft

Residential on 0.09 Acres

Dover, Calgary, Alberta

Discover this well-maintained single-family home perfectly located near schools, parks, and all the essentials for family living. With a thoughtful layout and inviting atmosphere, this home offers comfort, space, and convenience. Inside, you'll find 2 bedrooms on the main floor and 2 additional bedrooms in the fully finished basement—ideal for growing families, guests, or a home office setup. The living spaces are warm and welcoming, perfect for both everyday living and entertaining. Step outside to your own backyard haven—an ideal space for relaxing, gardening, or hosting summer get-togethers. Whether you're looking for a quiet retreat or a place for kids to play, this outdoor space has it all.

A double garage adds extra value, providing ample room for vehicles, storage, or workshop space. This home truly combines functionality with lifestyle in a family-friendly neighborhood. Don't miss your chance to own this wonderful home in a prime location—schedule your showing today!



Built in 1971

**Essential Information**

MLS® #	A2239277
Price	\$519,900
Bedrooms	2
Bathrooms	2.00
Full Baths	2
Square Footage	966
Acres	0.09
Year Built	1971
Type	Residential
Sub-Type	Detached
Style	Bi-Level
Status	Active

**Community Information**

Address	60 Dover Meadow Close Se
Subdivision	Dover
City	Calgary
County	Calgary
Province	Alberta
Postal Code	T2B 2E2

**Amenities**

Parking Spaces	2
Parking	Alley Access, Double Garage Detached
# of Garages	2

**Interior**

Interior Features	Ceiling Fan(s), Kitchen Island, No Smoking Home
Appliances	Dishwasher, Electric Stove, Refrigerator, Washer/Dryer Stacked, Window Coverings
Heating	Forced Air, Natural Gas

Cooling	None
Has Basement	Yes
Basement	Finished, Full

## Exterior

Exterior Features	Garden
Lot Description	Back Lane, City Lot, Garden, Landscaped, Treed
Roof	Asphalt Shingle
Construction	Stucco, Wood Siding
Foundation	Poured Concrete

## Additional Information

Date Listed	July 13th, 2025
Days on Market	2
Zoning	R-CG

## Listing Details

Listing Office	TREC The Real Estate Company
----------------	------------------------------

Data is supplied by Pillar 9â„¢ MLS® System. Pillar 9â„¢ is the owner of the copyright in its MLS® System. Data is deemed reliable but is not guaranteed accurate by Pillar 9â„¢. The trademarks MLS®, Multiple Listing Service® and the associated logos are owned by The Canadian Real Estate Association (CREA) and identify the quality of services provided by real estate professionals who are members of CREA. Used under license.