

\$534,900 - 33 Wheatland Place, Strathmore

MLS® #A2216126

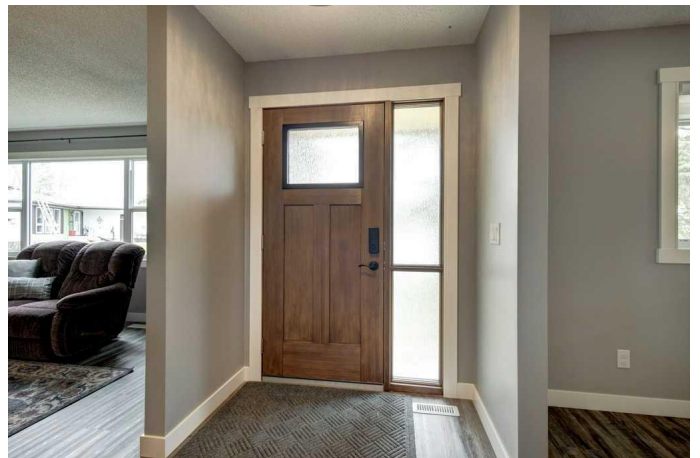
\$534,900

2 Bedroom, 3.00 Bathroom, 1,325 sqft

Residential on 0.23 Acres

Downtown_Strathmore, Strathmore, Alberta

Welcome to 33 Wheatland Place – where charm, space, and privacy come together in this beautifully maintained bungalow on a quiet cul-de-sac in Strathmore. From the moment you arrive, you'll be drawn in by the incredible curb appeal – a mix of cedar accents, beautiful masonry, and composite siding, with new parging and updated soffits and fascia on the way. Situated on a massive lot, this home offers rare privacy, mature landscaping, and room to roam. Step inside to find a bright, freshly painted interior with oversized rooms, new windows throughout, and new trim that adds a crisp, modern touch. The west-facing living room is filled with natural light, while the open-concept kitchen offers ample storage, new appliances, and another large window overlooking the front yard. An enclosed sunroom on the east side invites you to enjoy your morning coffee in comfort. The main floor features a great 4-piece bathroom, two spacious bedrooms, including a primary suite with a 2-piece ensuite, and plenty of storage throughout the home. Downstairs, the fully developed basement includes a wet bar, wood-burning fireplace, generous living space, office/playroom, full bathroom, large laundry area, and more storage. Out back, you'll find an oversized double detached garage with alley access and a huge parking pad big enough for your RV, diesel pusher, truck, or trailer – whatever your lifestyle demands. With central vac, a 100 amp electrical panel, and thoughtful upgrades throughout, this home has



been built to last and lovingly maintained.
Don't miss your opportunity to own this
one-of-a-kind property that blends comfort,
character, and convenience on one of
Strathmore's most desirable lots.

Built in 1973

Essential Information

MLS® #	A2216126
Price	\$534,900
Bedrooms	2
Bathrooms	3.00
Full Baths	2
Half Baths	1
Square Footage	1,325
Acres	0.23
Year Built	1973
Type	Residential
Sub-Type	Detached
Style	Bungalow
Status	Active

Community Information

Address	33 Wheatland Place
Subdivision	Downtown_Strathmore
City	Strathmore
County	Wheatland County
Province	Alberta
Postal Code	T1P1A5

Amenities

Parking Spaces	5
Parking	Double Garage Detached, Oversized, RV Access/Parking
# of Garages	2

Interior

Interior Features	Bar, Ceiling Fan(s), Central Vacuum, Closet Organizers, Storage
Appliances	Dishwasher, Electric Stove, Microwave, Range Hood, Refrigerator,

	Washer/Dryer, Window Coverings
Heating	Forced Air, Natural Gas
Cooling	None
Fireplace	Yes
# of Fireplaces	1
Fireplaces	Basement, Wood Burning, Brick Facing
Has Basement	Yes
Basement	Finished, Full

Exterior

Exterior Features	Other, Private Yard
Lot Description	Back Lane, Back Yard, Cul-De-Sac, Front Yard, Landscaped, Level, Treed
Roof	Asphalt Shingle
Construction	Composite Siding, Wood Frame
Foundation	Poured Concrete

Additional Information

Date Listed	May 1st, 2025
Days on Market	32
Zoning	R1

Listing Details

Listing Office	CIR Realty
----------------	------------

Data is supplied by Pillar 9â„¢ MLS® System. Pillar 9â„¢ is the owner of the copyright in its MLS® System. Data is deemed reliable but is not guaranteed accurate by Pillar 9â„¢. The trademarks MLS®, Multiple Listing Service® and the associated logos are owned by The Canadian Real Estate Association (CREA) and identify the quality of services provided by real estate professionals who are members of CREA. Used under license.