

\$296,900 - 3513 Forestry Avenue S, Lethbridge

MLS® #A2215028

\$296,900

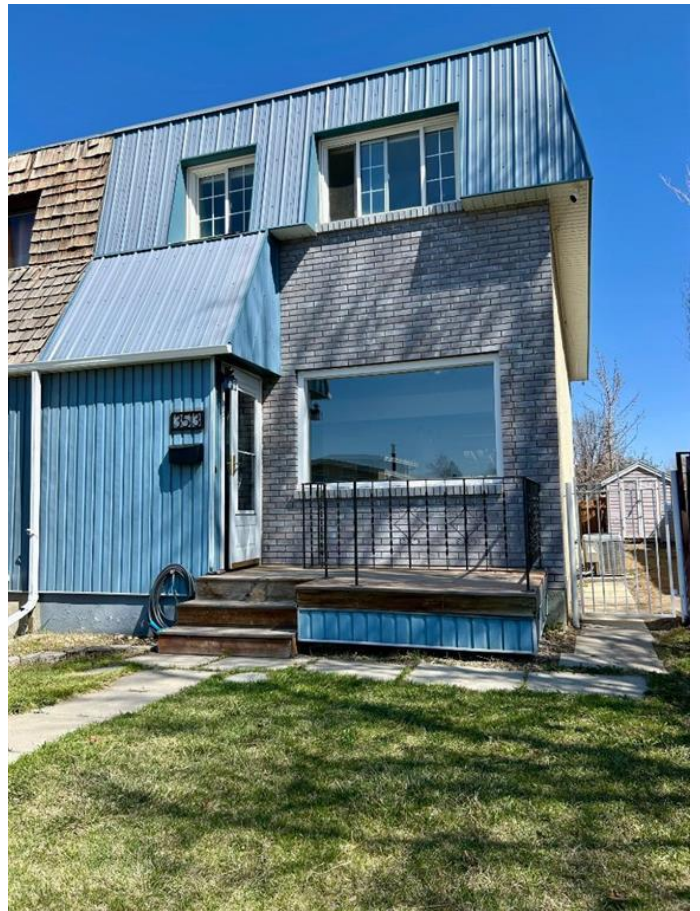
3 Bedroom, 2.00 Bathroom, 1,028 sqft

Residential on 0.07 Acres

Redwood, Lethbridge, Alberta

Come, check out this nicely renovated END UNIT! Three bedrooms up with updated bathroom, a totally updated main floor, including kitchen, layout, cabinets, granite, countertop, paint, and more! You will love the fact that there are no condo fees! You also have a private yard, with extra parking out back! Located in an excellent southside neighbourhood close to many main amenities! Donâ€™t forget about the central air conditioning, and a full basement waiting for your finishing touches!

Built in 1971



Essential Information

MLS® #	A2215028
Price	\$296,900
Bedrooms	3
Bathrooms	2.00
Full Baths	1
Half Baths	1
Square Footage	1,028
Acres	0.07
Year Built	1971
Type	Residential
Sub-Type	Row/Townhouse
Style	Townhouse
Status	Active

Community Information

Address 3513 Forestry Avenue S
Subdivision Redwood
City Lethbridge
County Lethbridge
Province Alberta
Postal Code T1K 3L2

Amenities

Parking Spaces 3
Parking Off Street

Interior

Interior Features See Remarks
Appliances Central Air Conditioner, Washer/Dryer
Heating Forced Air
Cooling Central Air
Has Basement Yes
Basement Full, Partially Finished, Unfinished

Exterior

Exterior Features Other
Lot Description Back Lane, Back Yard
Roof Asphalt Shingle
Construction Concrete
Foundation Poured Concrete

Additional Information

Date Listed April 25th, 2025
Days on Market 9
Zoning R-60

Listing Details

Listing Office Maxwell Capital Realty - Lethbridge

Data is supplied by Pillar 9â„¢ MLSÂ® System. Pillar 9â„¢ is the owner of the copyright in its MLSÂ® System. Data is deemed reliable but is not guaranteed accurate by Pillar 9â„¢. The trademarks MLSÂ®, Multiple Listing ServiceÂ® and the associated logos are owned by The Canadian Real Estate Association (CREA) and identify the quality of services provided by real estate professionals who are members of CREA. Used under license.

